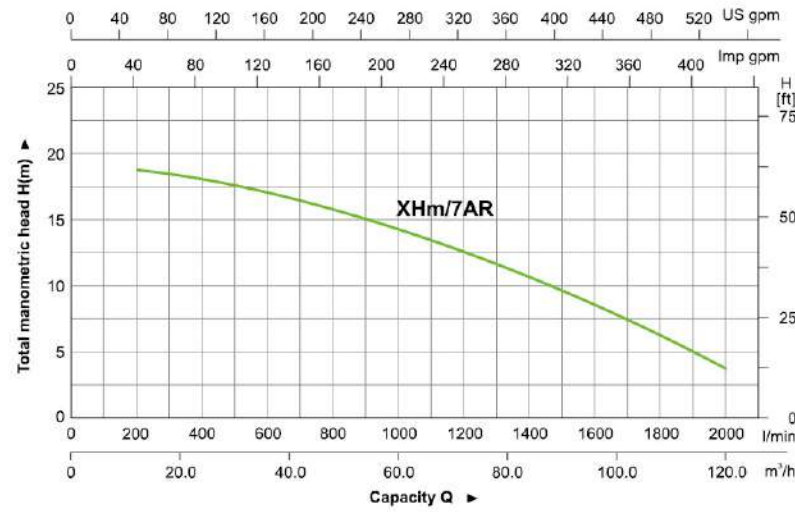




XHm

HYDRAULIC PERFORMANCE CURVE



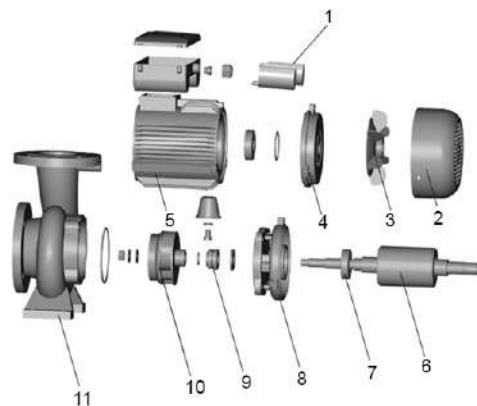
PUMP

- Transfer of clean water or non-aggressive liquid
- Special anti-rust treatment for pump body and support
- High flow and Medium/low head meet industrial and agricultural demand
- Max. liquid temperature: +40°C
- Max. suction: +8 m

MODEL	POWER		INLET/OUTLET	MAX.FLOW (L/min)	MAX.HEAD (m)	MAX.SUCT (m)
	(kW)	(HP)				
XHm/7AR	4	5.5	4"×4"	2200	18.8	8

MOTOR

- Copper winding
- Built-in thermal protector for single phase motor
- Insulation class: F
- Protection class: IPX4
- Max. ambient temperature: +40°C
- IE2 motor(Three phase, power ≥ 0.75kW)

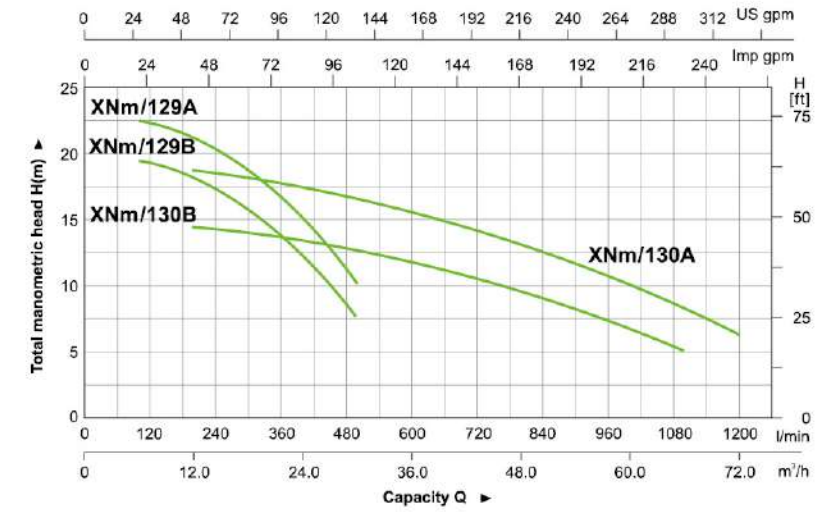


Part	
1	Capacitor
2	Fan cover
3	Fan
4	Rear cover
5	Stator
6	Rotor
7	Bearing
8	Support
9	Mechanical seal
10	Impeller
11	Pump body



XNm

HYDRAULIC PERFORMANCE CURVE



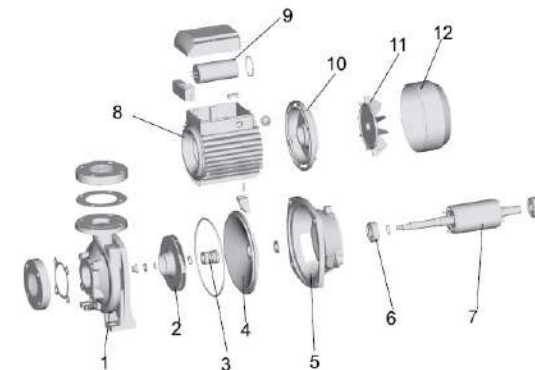
PUMP

- Transfer of clean water or non-aggressive liquid
- Special anti-rust treatment for pump body and support
- High flow and Medium/low head meet industrial and agricultural demand
- Max. liquid temperature: +40°C
- Max. suction: +8 m

MODEL	POWER		INLET/OUTLET	MAX.FLOW (L/min)	MAX.HEAD (m)	MAX.SUCT (m)
	(kW)	(HP)				
XNm/129B	1.1	1.5	2"×2"	600	20.2	8
XNm/129A	1.5	2.0	2"×2"	600	22.5	8
XNm/130B	1.5	2.0	3"×3"	1200	14.7	8
XNm/130A	2.2	3.0	3"×3"	1300	18.5	8

MOTOR

- Copper winding
- Built-in thermal protector for single phase motor
- Insulation class: F
- Protection class: IPX4
- Max. ambient temperature: +40°C
- IE2 motor(Three phase, power ≥ 0.75kW)



Part	
1	Pump body
2	Impeller
3	Mechanical seal
4	Bracket cover
5	Support
6	Bearing
7	Rotor
8	Stator
9	Capacitor
10	Rear cover
11	Fan
12	Fan cover